



JENSEN

DISTRIBUTORS & DEALERS

Guy Salmon Limited Jensen Distributors



We at Guy Salmon Ltd. are proud of our long association with Jensen and our position as leading distributors of the new Jensen Interceptor and FF Mk. II. For these are among the finest cars ever produced, cars that fully justify their enthusiastic reviews in the national motoring magazines.

Give yourself a rare treat: come and test-drive a Jensen. (Mid-winter, incidentally, is a particularly good time to experience that unique Jensen road-holding even in the most treacherous driving conditions.)

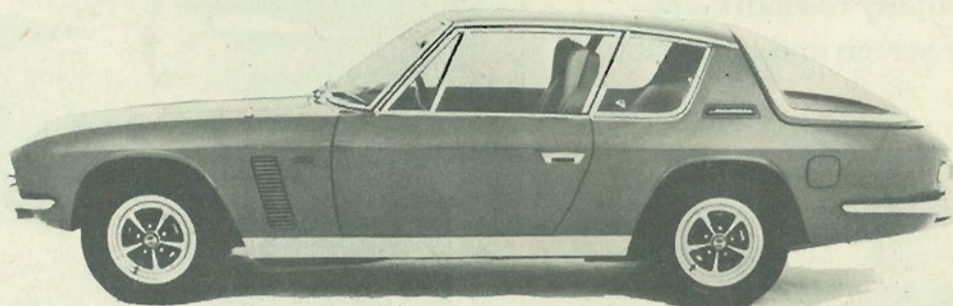
Call in any time—or simply 'phone 01-398 5551



GUY SALMON LTD.
Portsmouth Road (A3), Thames Ditton, Surrey

NEWBURY MOTORS LIMITED

FOR **JENSEN** *hand made cars*



To move a ton and a half of steel at speeds of more than 135 miles an hour needs enormous power.

The engine that does this for the Jensen is a Chrysler V8. Its capacity is 6.3 litres. It develops 325 brake horse power at only 4,600 r.p.m. It never gets strained, and it seldom needs tuning.

It is also amazingly quiet. You can have a peaceful conversation with your passengers at 100 miles an hour.

The time it takes you to get to 100 miles an hour can be as little as 18.2 seconds. You don't waste any time changing gear, because the Torque-Flite automatic transmission

does it for you. And if you have to stop in a hurry, there are Girling disc brakes on all four wheels. (The first British production car to have disc brakes on all wheels was a 1956 Jensen.)

There are less than 20 of these cars made each week. By modern mass-production standards, this is

ridiculous. Fortunately, the way a Jensen is built has nothing to do with modern mass-production standards.

Jensen
Hand made cars.

Enquiries in connection with new and used JENSEN cars welcome

Always a wide selection of used models available

NEWBURY MOTORS LIMITED, THE JENSEN DISTRIBUTORS

MANOR LANE, HALESOWEN, Nr. BIRMINGHAM, WORCS. TELEPHONE: HALESOWEN (021550) 1641